



# Continuous Group®

## Spouting Fascia Downpipes



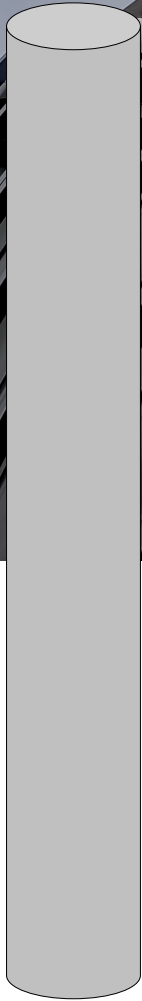
EF-100x55



EF-100



EF-80



### Overview

EZI-FLO Series Downpipes are manufactured from extruded aluminium then powder-coated. Super durable and compatible with water collection including above ground tanks.

EZI-FLO SERIES-DOWNPIPES

### Features

- ✓ Durable aluminium
- ✓ Colour match with your spouting or aluminium joinery\*
- ✓ UV resistant and tough materials
- ✓ Up to 20 year material warranty
- ✓ Massive Colour choice & more!

\* Not all aluminium joinery colours available can be matched

Type/size	Material	Colour Choice	Bracket Material	Bracket options	Downpipe options
<b>EF-100x55</b> <i>100x55mm rectangle</i>	1.9mm 6060 T5 aluminium	Over 50 powdercoat colours	Aluminium	Adjustable clamp	Large range of diecast fittings
<b>EF-100</b> <i>100mm Round</i>	1.9mm 6060 T5 aluminium	Over 50 powdercoat colours	Diecast Aluminium	Adjustable clamp	Large range of diecast fittings
<b>EF-80</b> <i>80mm Round</i>	1.6mm 6060 T5 aluminium	Over 50 powdercoat colours	Diecast Aluminium	Adjustable clamp	Large range of diecast fittings

### Available from these Continuous Group Locations:

NORTHLAND | AUCKLAND | WAIKATO | BAY OF PLENTY  
 TARANAKI | GISBORNE | HAWKES BAY | MANAWATU | WELLINGTON  
 NELSON | MARLBOROUGH | WEST COAST | CANTERBURY | OTAGO | SOUTHLAND

0800 50 1993

WWW.CONTINUOUS.CO.NZ



# EZI-FLO SERIES-DOWNPIPES

### PRODUCT SPECIFICATIONS

<b>ALUMINIUM</b>	1.60-1.90mm 6060 T5 extruded aluminium
<b>Colour finish</b>	Powdercoated. Listed colours available are: CG Range, Designer Range & Endurance Range colours. Visit: <a href="http://www.continuous.co.nz/finishes">www.continuous.co.nz/finishes</a>
<b>Bracket</b>	Adjustable clamp -Diecast aluminium
<b>Maximum Bracket spacing</b>	<b>2400mm</b> (It is recommended that brackets are placed within 400mm of bends, tees and drain connections)
<b>Recommended Fixings</b>	Minimum Class 4 screw &/or rivet fasteners compatible with substrate and bracket material.

### IMPORTANT SET OUT REQUIREMENTS

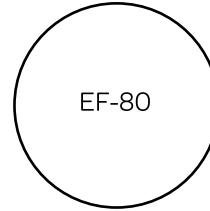
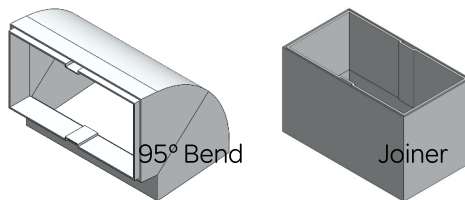
All stormwater drains to be according to MRM code of practice section 5.4 and E1/AS1 section 3

Form series downpipes can be used for water collection and can be used where water tank head height is higher than top of drain. Sealed pressure coupling must be used in this circumstance

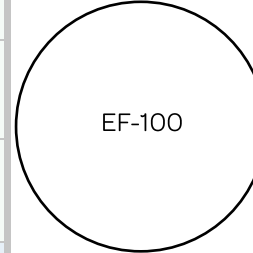
Timber fixing points for downpipe brackets should be installed when soft claddings are used (IE: Polystyrene with plaster)

Downpipe calculations for roof area, refer to MRM code of practice sections 5.4.1; 5.4.2; 5.7

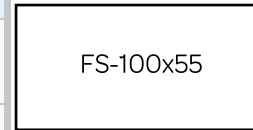
#### EF-100x55 Rectangle fittings



Inside Diameter	Outside Diameter	Capacity mm <sup>2</sup>
78.8mm	82mm	4870

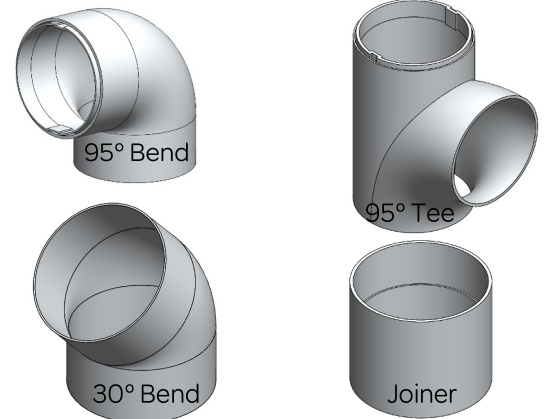


Inside Diameter	Outside Diameter	Capacity mm <sup>2</sup>
99mm	102.8mm	7694



Inside Diameter	Outside Diameter	Capacity mm <sup>2</sup>
96.2x 51.2mm	100x 55mm	4925

#### EF-80 Round fittings



[More downpipe fittings available on our website.](#)

<b>Scope of use</b>	Continuous Group Ezi-Flo Series downpipes are intended to collect and channel water that runs off a roof. It is intended that the metal downpipes be placed at the perimeter of the building (Positioned outside the building envelope).
<b>NZBC Compliance</b>	Test information available from Inex Metals, combined with past history of downpipe systems, indicate, that provided the product use and maintenance is in line with the guidelines contained in the current literature, Continuous Group Ezi-Flo Series downpipes can be expected to meet the performance criteria in clause E2 of the New Zealand building code.
<b>Durability</b>	All Products in the Ezi-Flo series are manufactured in Aluminium and are fit for purpose in environment zone B, C, D and E* *In all cases, areas with high wind &/or salt &/or thermal/industrial atmospheric conditions may require specific engineering design (S.E.D) Reference: Section 4, "Durability" from NZS3604:2011.
<b>Maintenance</b>	Continuous Group Ezi-Flo Series downpipes require regular maintenance to ensure the useful life of the products. Minimum maintenance interval of every 6 months <u>or</u> as often as needed to avoid build up of contaminants (dirt, salt, pollen etc.) on the downpipe surface. Simply spray and rinse with water and/or if necessary scrub with a soft nylon brush. More information and specific maintenance products are available on our website <a href="http://www.continuous.co.nz/care-and-maintenance">www.continuous.co.nz/care-and-maintenance</a>
<b>Warranty</b>	Environment zone B, C & D—20 year perforation warranty ; 5 year paint warranty. Environment zone E—15 year perforation warranty ; 5 year paint warranty. Full details and conditions of our comprehensive warranty can be found at <a href="http://www.continuous.co.nz/warranties">www.continuous.co.nz/warranties</a>